



The
ramp book

FEAL
...improving life



” We make the world more accessible.



Table of Contents

About us

- 6 We work together
- 8 Bergslagen's industrial history
- 10 History
- 12 Scandinavian design
- 14 For a greener world
- 16 Personal touch
- 18 Written in aluminium
- 20 A long history of innovation
- 22 Across the globe
- 24 In two corners of the world
- 26 Ramps for every situation

Products

- 28 **Portable ramps**
 - 30 Technical solutions
 - 32 Fixed ramps
 - 33 Telescopic ramps
 - 34 Folding ramps
 - 35 Folding telescopic ramps
 - 36 Anyramp
 - 37 IRP ramps
- 38 **Transport & tailboard ramps**
 - 40 Technical solutions
 - 42 Two-part ramps
 - 43 Three-part ramps
- 44 **Modular System Ramps**
 - 46 Technical solutions
 - 48 Landings
 - 49 Ramps
 - 50 Handrails
 - 51 Accessories
- 54 **Drive-in ramps**
 - 56 Fixed drive-in
 - 57 Folding drive-in
- 58 **Loading ramps & loading rails**
 - 60 Loading ramps
 - 61 Loading rails
- 62 **Cover plates**
- 63 **Threshold ramps**

Warranty & Index

- 65 Warranty
- 66 Index
- 67 Rampguide



We work together

The best thing about this job is attending to trade shows, meeting partners and customers that use our products every day. Seeing that our efforts are utilized to improve life all over the world. When we get back home we transform our impressions and all the valuable feedback into product development or new solutions.

I began my career at FEAL by working during the summers, together with my father in the metal shop. My father was one of the founders and I spent a lot of time at the factory as a kid, watching and learning how everything was made. After a short stint of salesmanship in Stockholm, I realized that I belonged in the rampbusiness and returned to Horndal.

I started out with packaging and after a while I took on the responsibility of negotiating with suppliers and meeting customers. I did a little bit of everything I suppose. Later I learned this is what the FEAL spirit is all about. Everybody that works here has well defined responsibilities, but our sense of urgency creates a readiness to contribute wherever we are needed. The atmosphere is warm and friendly and we really care about each other, and want to do our best. Everyone is prepared to walk that famous extra mile.

We constantly try to improve both products and services. Many ideas are found among the people who are using our products, but also among our skilled craftsmen. We are still a small company without staff in various positions. This enables us to react and respond very quickly. We are always striving to improve and to grow. We believe that we achieve this by working together, not only internally but also together with the most demanding customers and partners. And last but not least, by listening.

Our vision is clear; we will improve life by enabling access for all. We will keep on doing this by manufacturing the best ramp possible.

Welcome to the FEAL family!

Mats Sundstedt, CEO

” The atmosphere is warm and friendly. Everyone cares about each other.

Bergslagen's industrial history

The first miners came to Bergslagen in the Middle Ages. They encountered a forest wilderness scattered with streams and lakes and tall mountains rich in ore. They called these mountains Western Mountain and Eastern Mountain. Men, women and children worked day and night to mine the ore. It was a tough life, with long days of strenuous work in inaccessible environments.

Over time, the miners developed ways to optimally extract the natural resources. New techniques were developed: machines and chemical processes that made their jobs a bit easier. These innovative techniques

made Bergslagen an international hub for the steel industry.

The little town of Horndal has a central place in this history. The ironworks next to the stream was built way back in 1652. Skilled Walloons from the Netherlands were hired to forge the iron and the town grew rapidly. In 1861, the company began to expand and in just a few short years, the production of iron and wrought-iron goods had increased from 200 to 2000 tonnes a year. By the end of the 19th century, the Horndal ironworks had become a major industry – a modern ironworks with electricity and its own railway.



This was once the site of the world's largest industry.

But a century later, the world had begun to catch up with Bergslagen's developments and competition intensified. Some of the industry could be saved by reshaping ownership structures into larger and more product-focused companies, but the majority of the companies were forced to close down. The ironworks in Horndal closed its gates in 1979. There were families in Hordal then that had been working at the ironworks for five generations.

A steel sheet company was set up in the ironworks old premises. But the business wasn't profitable. Two of the employees broke away and started a new com-

pany specializing in ramps. They named their company FEAL AB.

A bit of the industrial history of Bergslagen lives on in FEAL. But instead of big industry, the company decided to focus on a narrow product range and a scalable production process. A new era in Bergslagen's industrial history had begun.

1900



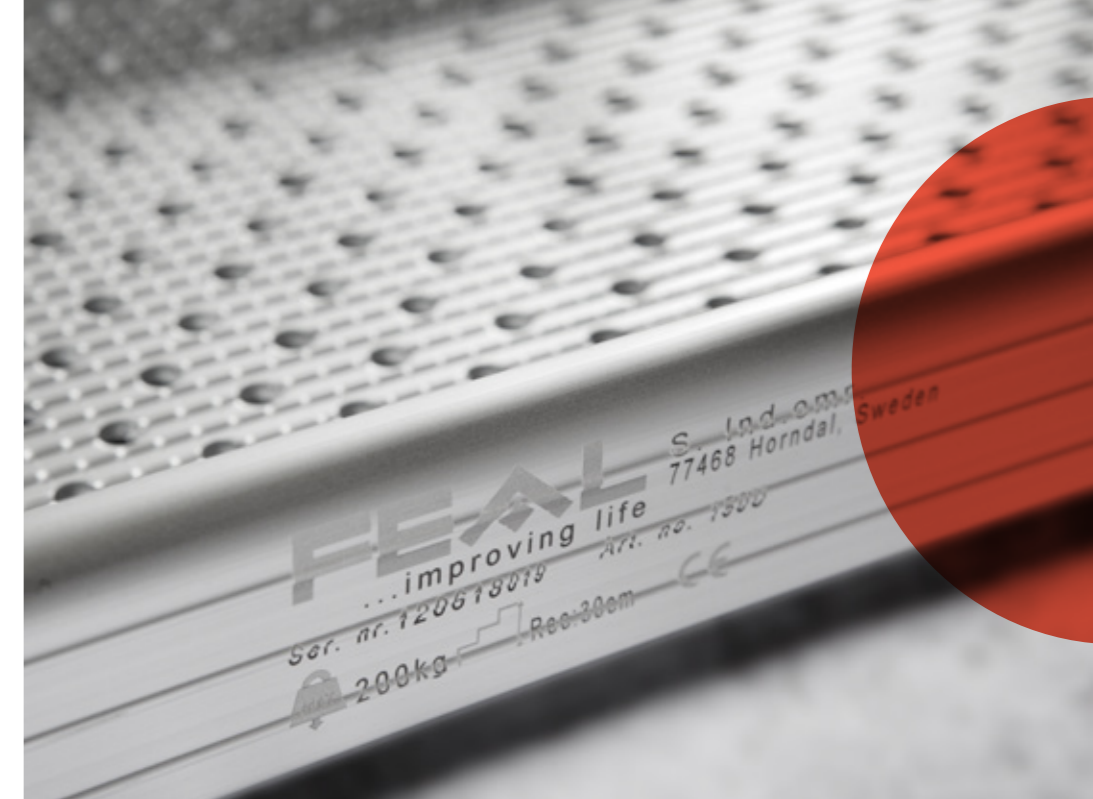
2012



History

With new times came new needs. Sweden was a forerunner in the development of assistive aids for people with disabilities. The Swedish Institute of Assistive Technology (SIAT), a national resource centre for assistive technology and accessibility for persons with disabilities, was founded back in 1968.

When FEAL was started, the objective was to manufacture functional aids that were both durable and user-friendly. Our expertise in materials and manufacturing processes has been taken from the industrial history of Bergslagen.



1968

1991

1992

1995

1997

1999

2000

2001

2002

2005

2008

2011

2012

FEAL AB founded in Horndal.

First tailboard ramp introduced.

Professional Board of Directors appointed with outside director.

Company expands and moves into new premises.

New surface treatments completed, enabling the company to manage the entire manufacturing process in the same premises.

FEAL AB named Entrepreneurial Company of the Year.

10th anniversary.

Perforated telescopic ramps launched.

A non-executive Chairman of the Board is brought into the company.

Operations automated and expanded.

FEAL brings distribution in-house and starts building an international partner network.

FEAL AB expands in a number of segments.



Scandinavian design

Design isn't only what is seen by the naked eye. For us, design is just as much about understanding the customer's needs and finding solutions for everyday life. Solutions that make it easier to live, travel and work. Our products are always simple and stylish, in durable materials that blend in well in all types of environments. Ramps that fit perfectly in your home, your

car or your backpack.

This was also the thought that formed the basis of the Scandinavian design movement. Solutions that are simple, minimalistic and functional. Domestic materials that last for many, many years. Strength and aesthetics that have made Scandinavian design famous around the world. This is where we find our inspiration.

” Simple, minimalistic and functional solutions.



For a greener world

Here at FEAL, our goal is to leave the smallest carbon footprint possible. That is why we have adopted an environmental policy that all employees follow. Among other things, we have reduced our waste and cut down on unnecessary transports. We don't overproduce and we make sure that our organization is as streamlined as it can possibly be to ensure that we are working efficiently. A concern for the environment also means ensuring that all employees are happy and healthy at work and that their skills are utilized.

Our concerted environmental initiatives at the com-

pany have led to our being awarded the ISO 14001 certificate.

In our short history, we have been conferred the distinctions of Entrepreneur of the Year and the AAA Diploma for top credit rating.

We continue to move ahead, together, to live up to our customers' high standards for quality, the environment and safety.





Personal touch

Everyone is different. The ramp that is perfect for one customer may not be quite right for another customer's wants and needs. That is why we are more than happy to customize our products to the specific requests of each customer.

Since FEAL's start in 1991, we have made lots of personal adaptations. Ramps to suit different homes, different cars and different people. Ramps in different sizes that can be mounted in different ways.

We always develop our products with great care and consideration. At FEAL, you get service with a personal

touch, and you have every opportunity to take part in the design of your own ramps. We handle the entire process – from sketch to packaging – at our factory in Horndal. Which means that we can deliver customized ramps quickly.

New ideas are often born while we are out meeting the people who use our ramps. We then take these ideas home to the drawing board. Finding creative solutions to problems is the core of our value proposition.

” We deliver customized ramps quickly.



Written in aluminium

Aluminium is a fantastic material. Ductile, corrosion-resistant and incredibly strong, yet still lightweight. A malleable material that can be welded, soldered and bonded. It takes a small amount of energy to recycle aluminium, which makes it a really “green” material.

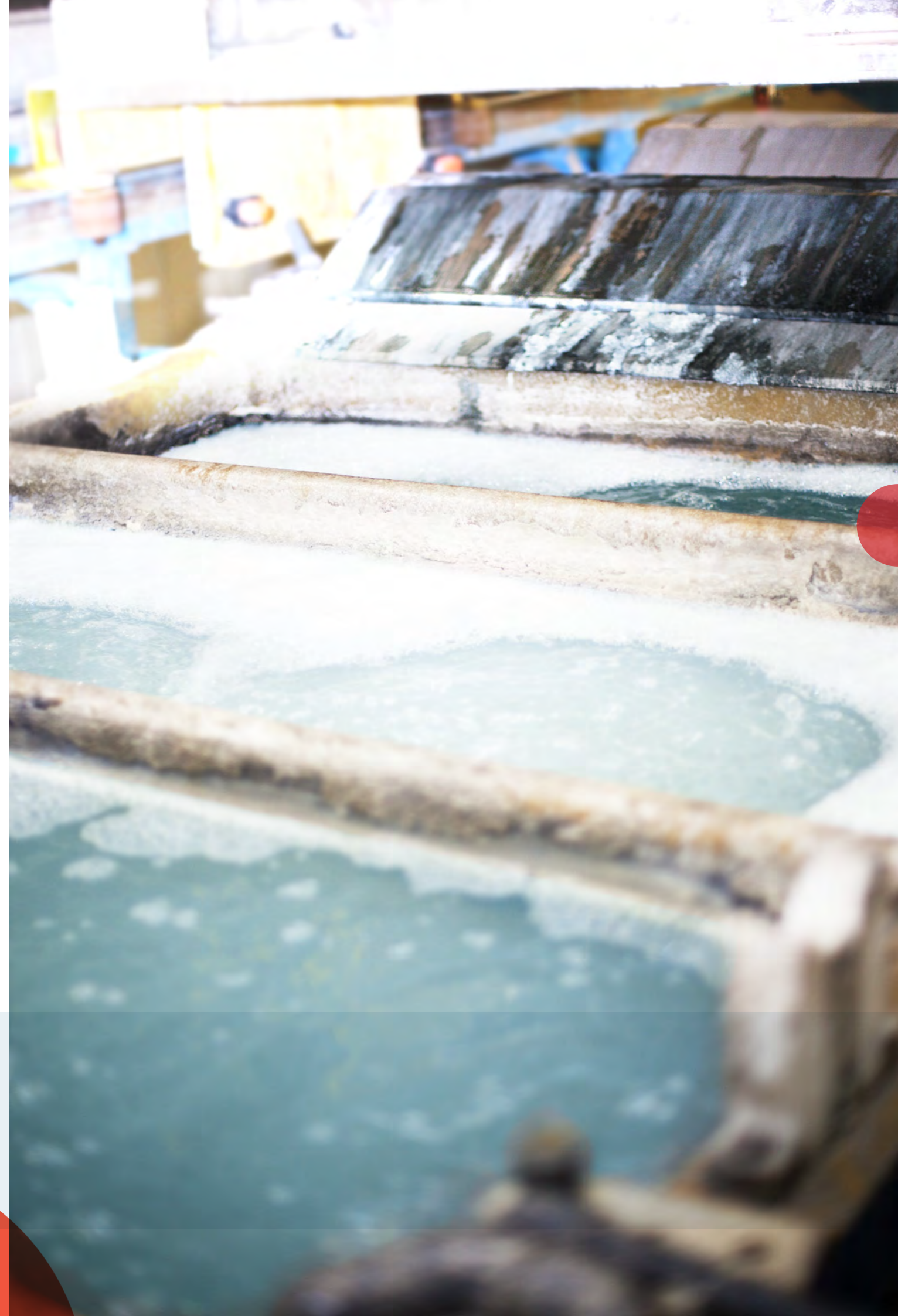
This gives us a material that is lightweight and eco-friendly, with a long service life and minimal maintenance requirements. At our factory in Horndal, we anodize our aluminium products to make them even more corrosion-resistant and help them withstand daily wear, salt, dirt and moisture. Leading electric currents

through an acid bath strengthens the protective coating of aluminium oxide. The process doesn't affect the shape or the dimensions of the metal. Our aluminium remains malleable and lightweight, but with a surface layer that is up to three thousand times as strong as it was before anodization.

We also make expanded metal in aluminium, steel and copper. Expanded metal is a strong and flexible material that is easy to handle and transport.

The result is durable and lightweight ramps that are perfect for any environment.

” Durable lightweight ramps, perfect for any environment.



A long history of innovation

A magic flute was played, and the stones floated up and landed in exactly the right place. This is one of the many legends that explains how the magnificent Egyptian pyramids could be built by slaves as early as 2689 B.C.

Another, more conventional, explanation is that sloped planes were used to transport the stones. These could well have been the world's first ramps.

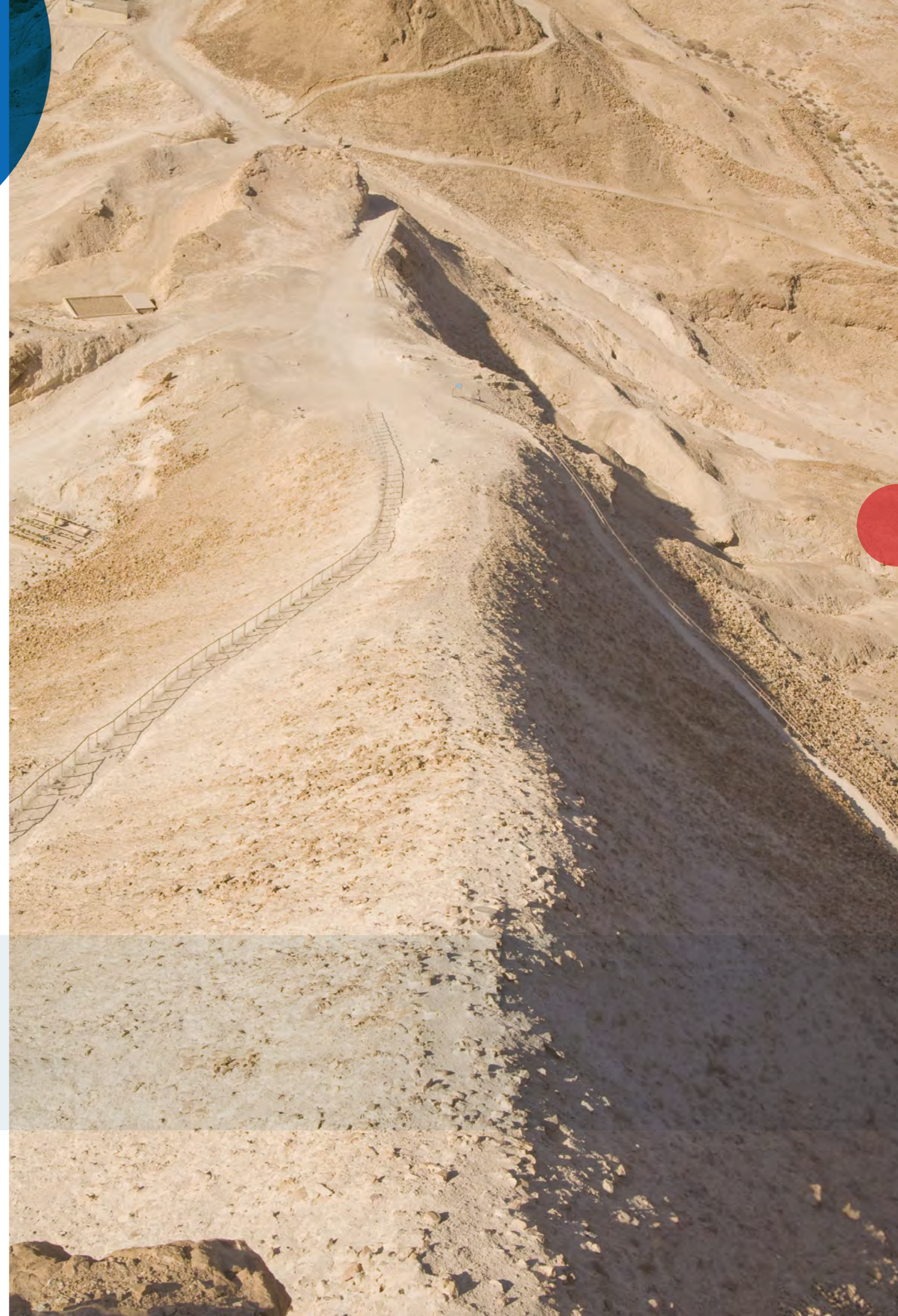
Ramps that have since been used in countless ways throughout history. To transport water or goods, in sieges and in construction.

In the year 72, the Roman legion built an earthen ramp to take the cliff fortress of Masada in the Negeve Desert near the Dead Sea (which you can see on the

picture on the opposite page). A fortress that had stood for seventy years and which was considered impene-trable because of its difficult location. But in just one year, the Roman soldiers had erected an embankment that reached a hundred metres up the cliff wall. Battering rams could be transported up the ramp and the fortress was soon besieged by the Romans.

Over the centuries, ramps have been refined and improved. More and more applications have been discovered. But the objective has always been the same: to solve problems and increase accessibility. In the future, we will surely see even more intelligent applications for ramps.

” Over the centuries, ramps have been refined and improved.





Across the globe

In 2011, we took the big step out and began to sell directly to customers on an international market. We have met people from all over the world and talked to them about accessibility, possibilities and development. Accessibility varies from country to country. Some countries and cities are far out on the cutting edge in their efforts to adapt public places, shops and sidewalks to accommodate wheelchairs and mobility scooters. In other countries, work has only just begun.

Yet in every single place we have visited, we have met people and organizations working for a more ac-

cessible world. It is inspiring for us to see this dedication and drive, and sometimes where you would least expect it. Despite cultural differences, all of these people share the same dreams – to explore nature, to be active in their communities, to scuba dive, to fish, to drive a car, to travel... the list goes on and on. There is always more to do and there is always the need for new inventions to help make these dreams a reality.

FEAL wants to be a part of these efforts. We aim to make the world a more accessible place.

” It is inspiring for us to see the dedication and drive that is out there in the world.

In two corners of the world

Conditions for people with disabilities differ throughout the world. FEAL asked two people to tell us about their lives.

“ I have overcome both physical and psychological obstacles.



USA

Pat Corcoran grew up in Denver, Colorado and now lives with his wife Rebecca and two children in Florida. Pat has been a career soldier his entire life. In 2009, he was injured in a bomb attack while on duty and was paralyzed from his waist down.

“It was a near-death experience,” he says. “I was completely shattered and had severe injuries. But since that day, my body has been gradually recovering. I continue to fight every day to get stronger.” The injury meant that Pat has to use a wheelchair to get around.

“I’m lucky that I live in Florida,” he says. “It is the most accessible state I have ever seen. Often, I have no trouble at all getting in and out of buildings and stores, but of course sometimes I come to places that are not accessible. Then I get frustrated, but I try not to think about it too much. I believe that it will get better with time.”

Before his injury, Pat enjoyed an active lifestyle and took part in activities like hunting, diving, fishing and

cooking. The situation is a bit different now, but he has found a number of solutions to help him continue his activities.

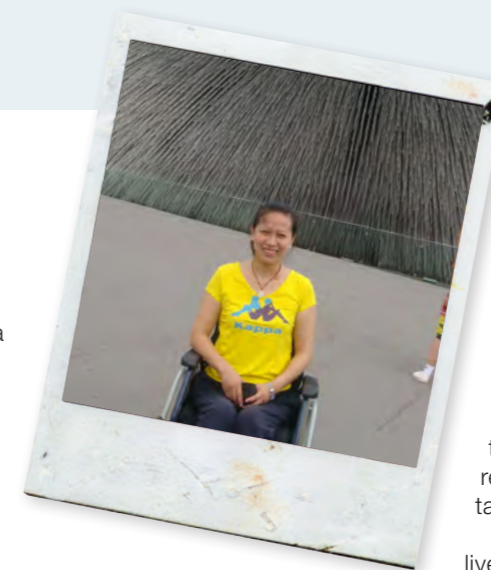
“I’ve become very inventive and have been able to overcome both physical and psychological obstacles. Sometimes I have to realize that I can’t do certain things, but for the most part, I can live my life like I did before my accident.”



China

Zhanxin Tang lives in Xinjiang, a city in northwestern China. She was one of the first people in China to start using an electric wheelchair on a daily basis. But this poses a problem, because most buildings in her city do not have ramps or elevators.

“Most public buildings have long flights of stairs, such as banks, shops, restaurants and cinemas,” says Zhanxin. She says that most people with disabilities in her city don’t go out very often.



“The majority of disabled people in my city live below the normal standard of living. They often receive subsidies from the government or from the place they were working when they were injured. Most live with their families, who take care of them.”

But Z has chosen a different path. She lives alone and has continued to work after the injury that put her in a wheelchair.

“I dream about living a normal, healthy life and I try to do that to the best of my abilities.”



Ramps for every situation

More and more people have discovered the many uses of our portable ramps. Our ramps are a helping hand in construction, when heavy machines and materials need to be transported, in industry, and in service-oriented companies such as the cleaning sector. With the help of our ramps, it's easy to drive cleaning machines up into a van for transport to the next location. The perforated surface makes the ramps secure even under heavy loads and offers excellent slip resistance.

The ramps are easy to bring along and set up behind a vehicle or trailer.

They're also perfect for motorbikes, mopeds, ATVs and snow blowers. Or why not use a ramp in the garden to drive your wheelbarrow up the compost heap?

Portable ramps are also a great help getting dogs in and out of the car. Your four-legged friend can take a leisurely stroll up without putting any stress on his hips or joints.

” Your helping hand in all kinds of situations.



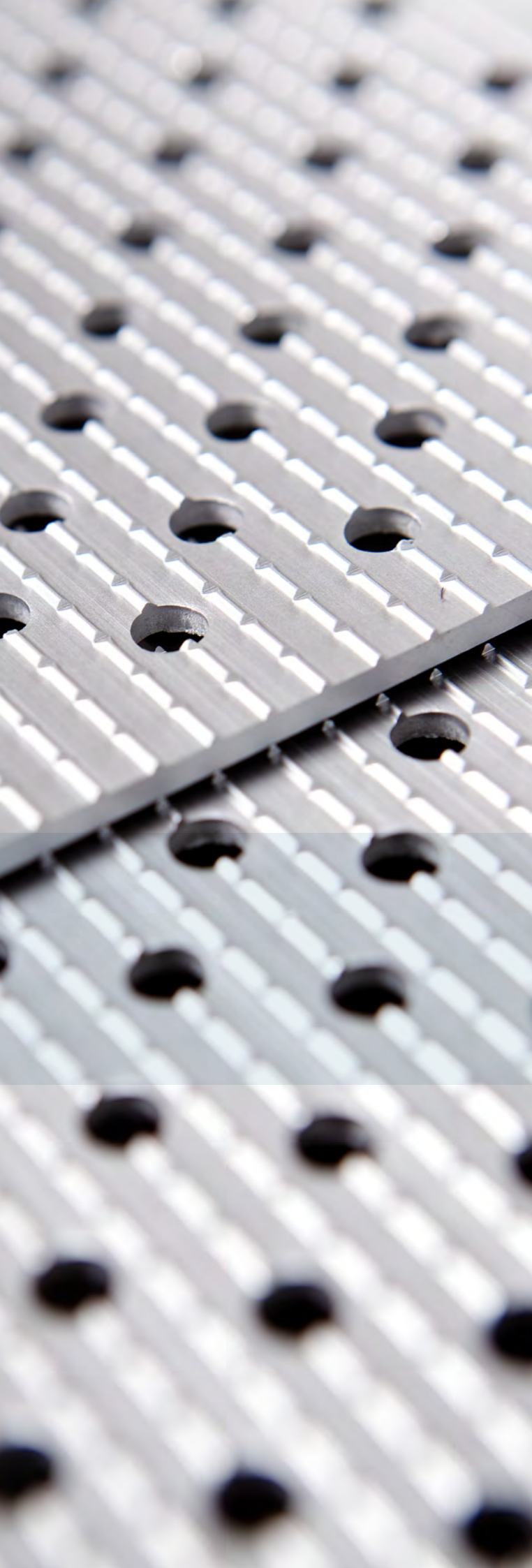


Portable ramps

Fixed, folding or telescopic. Our portable ramps are available in a variety of different shapes and sizes. They're easy to bring along on trips or to places that do not have fixed ramps. With handles that retract effortlessly, simple locks that you can open and close in one easy step, and superior slip resistance.

All of our portable ramps have a side profile of 52 mm in height, except FL 110, FL 150 and FL 200, which have a 35 mm side profile. In these, the side profile also functions as a handle.

Please contact us by phone or email for personal assistance and service. Also see our Ramp Guide on page 59 (Fig. 1.2 for portable ramps).



Easy as Perfolight

Perfolight is the name of our perforated portable ramps. They have the lowest weight possible, without any loss of strength.

Non-slip surface

The unique traction surfaces on our portable ramps have been developed to create the most slip-proof ramps possible, with the ultimate grip for upward and downward rolling.

Strength and durability with iRamp

Our new series of iRamps are smooth, portable ramps made in honeycomb aluminium. Extremely strong and durable ramps, yet still very lightweight.

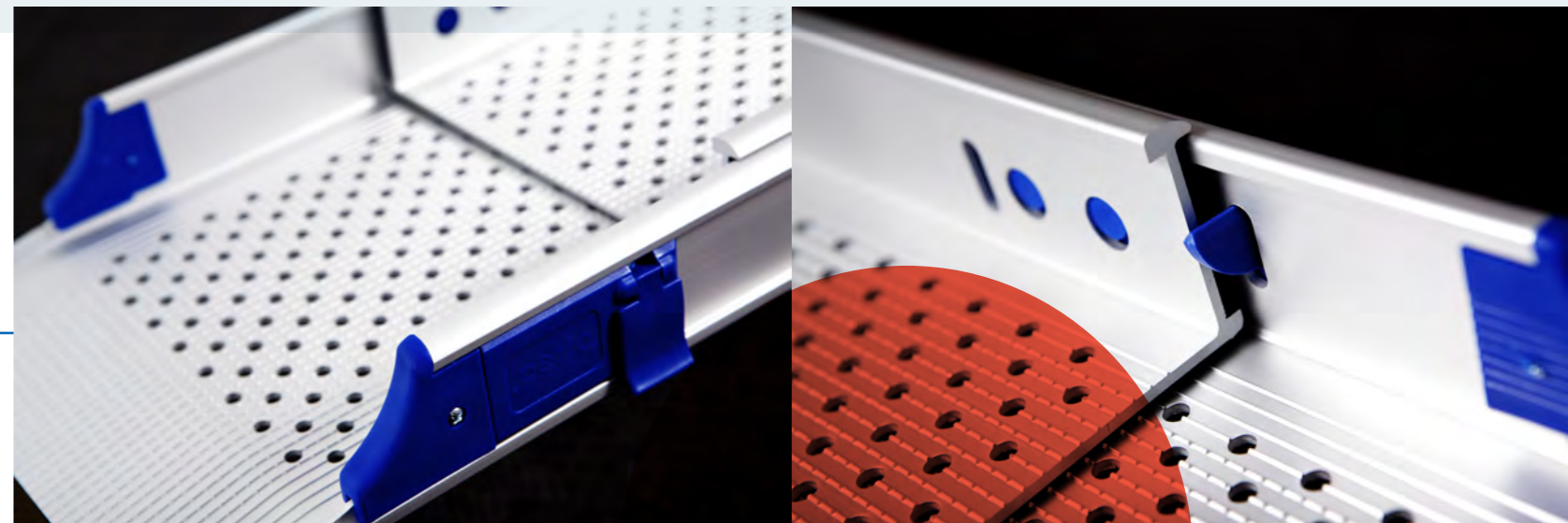
perfo
L I G H T

iRAMP[®]
P O R T A B L E

Technical solutions
Portable ramps

Easy locking

For our telescopic ramps, we have developed a locking function that is very easy to open and close without compromising on safety. Easy to use, both for those with somewhat weaker grips and for those wearing thick work gloves.



Fixed ramps

Our fixed ramps are available in a range of sizes to meet any requirement.



perfo
LIGHT

Telescopic ramps

Our folding telescopic ramps are available in long lengths to enable use in a range of different environments.



perfo
LIGHT

	Length (cm)	Weight/ea (kg)	Max load/ea (kg)	Int. width (cm)	Rec. max height (cm)
X 50	55	1,5	200	21	10
X 100	116	3,1	200	21	20
XW 100	106	3,5	200	27	20

	Min length (cm)	Max length (cm)	Weight/ea (kg)	Max load/ea (kg)	Int. width (cm)	Rec. max height (cm)
T 90	58	90	2,8	200	19	20
T 120	75	119	3,7	200	19	25
T 200	116	202	5,6	150	19	40
T 200-3	87	199	6,5	150	17	40
T 300	116	288	8,2	125	17	60

Folding ramps

Our folding ramps are easy to bring along and come in several different sizes to meet any requirement.



	Length (cm)	Length folded (cm)	Weight/ea (kg)	Max load/ea (kg)	Int. width (cm)	Rec. max height (cm)
F 110	110	57	3,8	200	21	20
F 150	150	76	4,9	200	21	30
F 200	200	101	6,3	150	21	40
FL 110	110	56	2,3	200	18	20
FL 150	150	76	3,4	200	18	30
FL 200	200	101	6	150	18	40
FW 200	212	107	8	150	27	40

Folding telescopic ramps

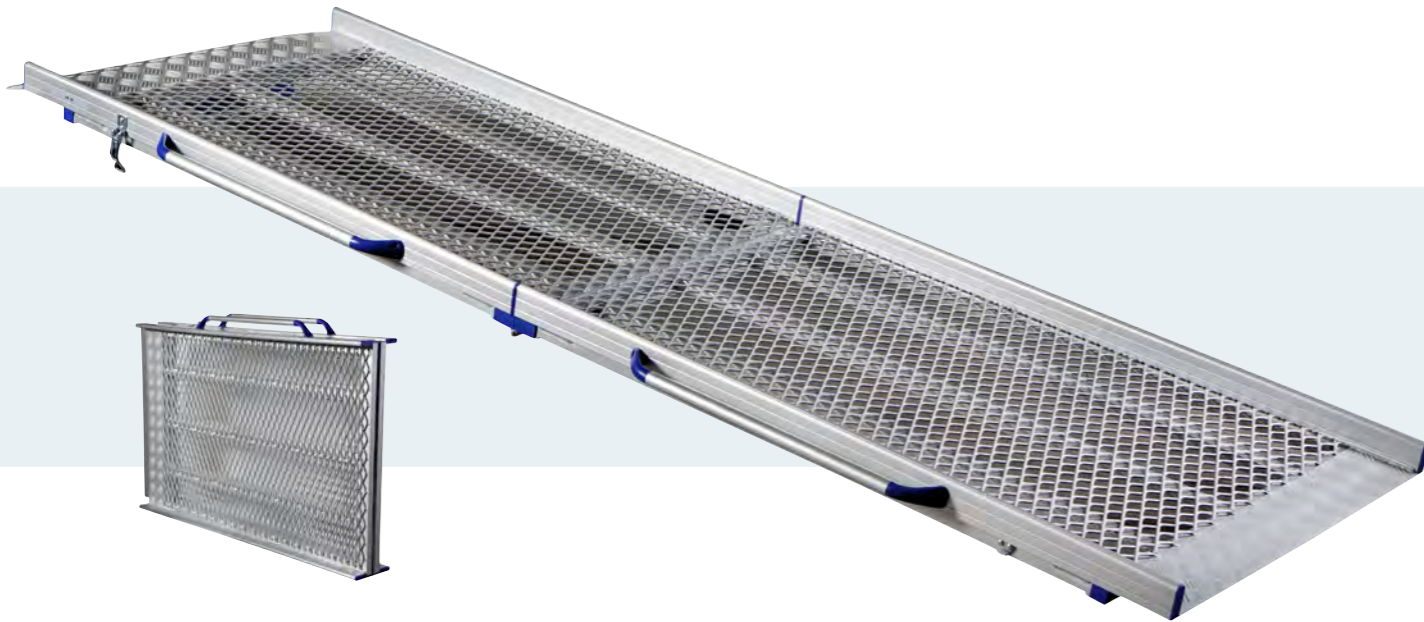
Our folding telescopic ramps can be used in many different types of environments. Easy to fold and transport.



	Length (cm)	Length folded (cm)	Weight/ea (kg)	Max load/ea (kg)	Int. width (cm)	Rec. max height (cm)
FTW 200	205	77	8,3	150	25	40
FTW 300	295	107	11,4	125	25	60
FT 200	201	76	6,8	150	19	40
FT 300	276	101	8,6	125	19	60

Anyramp

Our lightweight and non-slip portable loading ramps, Anyramp, have a wide range of applications. They can be mounted in one easy step, and removed just as easily.



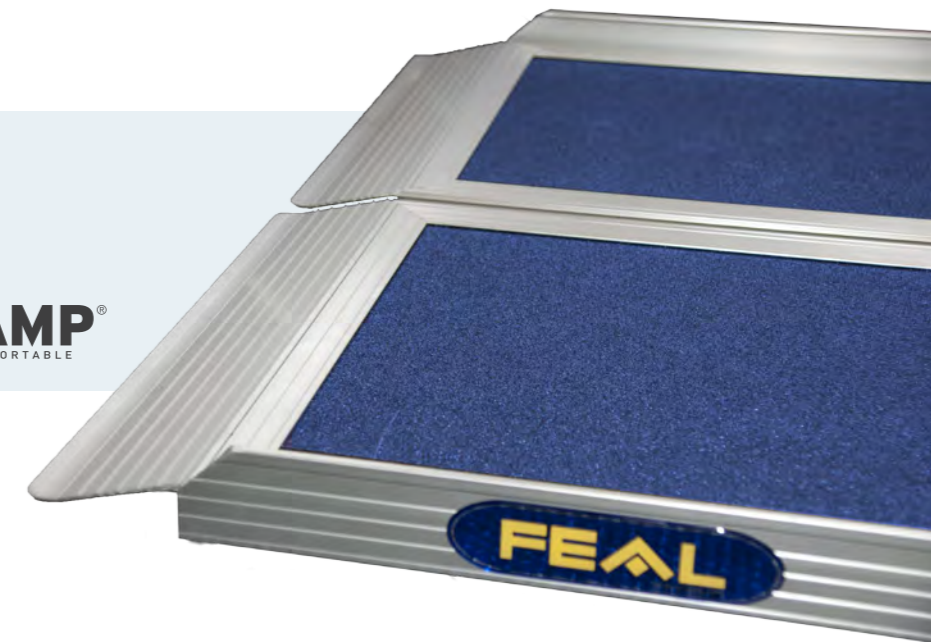
IRP ramps

IRP is a new portable ramp that folds length-wise. It provides a complete traction surface for electric wheelchairs, three-wheeled scooters, etc. A very lightweight ramp in durable materials that can support heavy loads.



IRP ramps are only 5.5 cm thick when folded.

iRAMP
PORTABLE



	Length (cm)	Length folded (cm)	Weight (kg)	Max load/ea (kg)
VR 16	160	85	18	400
VR 20	200	105	21	400
VR 25	250	130	25	400
VR 28	279	145	29	400

	Length (cm)	Width (cm)	Int. width (cm)	Width/ thickness folded (cm)	Weight (kg)	Max load (kg)	Rec. max height (cm)
IRP50	52	78	76	41,5/ 5,5	3,8	350	10
IRP90	92	78	76	41,5/ 5,5	6,5	350	18
IRP120	116	78	76	41,5/ 5,5	8,7	350	24
IRP170	167	78	76	41,5/ 5,5	12,5	350	34
IRP200	200	78	76	41,5/ 5,5	14,7	350	40



Transport and tailboard ramps

Our transport and tailboard ramps have a unique surface treatment that provides excellent grip and makes loading and unloading simple and safe. They are secured in the vehicle with our floor mounting plates and can be mounted or removed in one easy step. The perforations allow the driver to see through the folded ramp in the rear view mirror.





Anti-slip and a clear view

Our transport and tailboard ramps have a traction surface with excellent slip resistance. The perforations let through snow, rain and dirt and allow good rear view visibility in the vehicle.

In and out like lightning

Our transport and tailboard ramps are very simple to mount and to remove. They are designed to be as out of the way as possible, but if you should need to take them out of the vehicle anyway, it's easily done with the help of two simple clasps on each side of the ramp.

Technical solutions

Transport & tailboard ramps

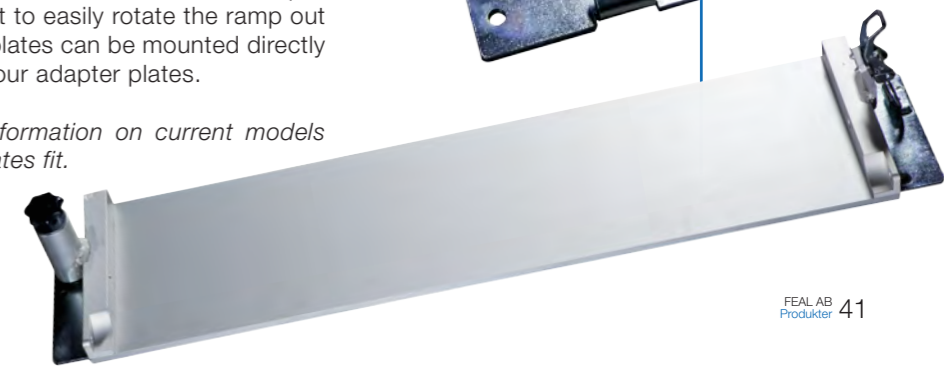


Floor mounting plates

All transport ramps can be easily mounted in your car with our floor fixing device, which attach directly to the floor of the vehicle. An even simpler solution is our adaptor plates, which fit into the vehicle's original mounts and are available for a range of different vehicle models.*

Our rotating plates offer easier access to vehicle space. On one side is a shaft to easily rotate the ramp out of the way. The rotating plates can be mounted directly to the vehicle floor or to our adapter plates.

**Contact us for more information on current models and what vehicles the plates fit.*



Two-part ramps

Our two-part ramps are easy to handle and fold up quickly.



Three-part ramps

Our three-part ramps have a lower loading surface than our two-part ramps. They are longer when extended, which gives them a gentler slope.



	Length extended (cm)	Height in car (cm)	Weight (kg)	Max load (kg)	Int. width (cm)
BGR 19	182	102	22	400	82
BGR 21	202	112	24	400	82
BGR 23	222	122	26	400	82
BGR 27	262	142	30	400	82

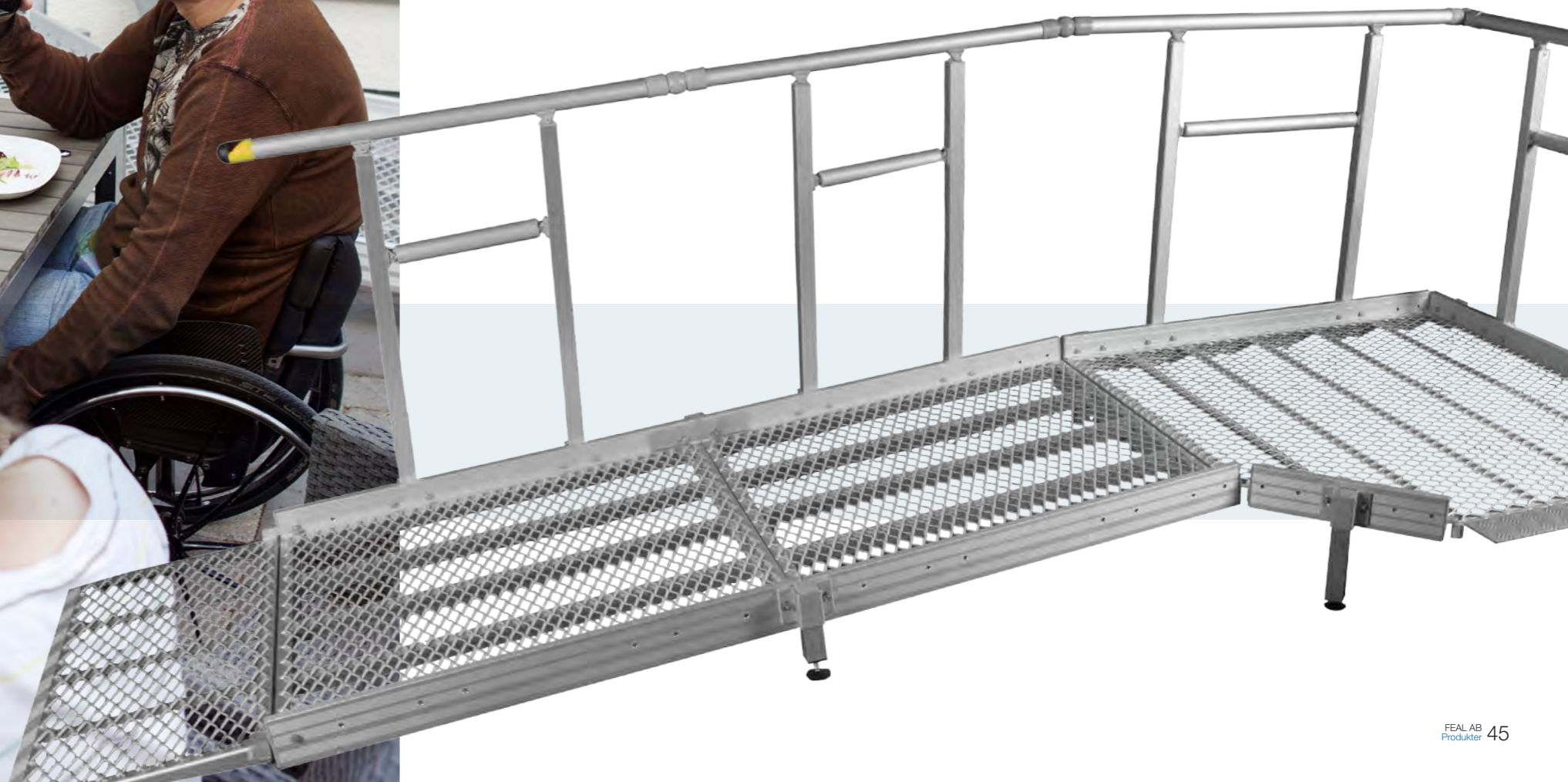
	Length extended (cm)	Height in car (cm)	Weight (kg)	Max load (kg)	Int. width (cm)
BGR 19-3	171	67	23	400	80
BGR 25-3	235	92	28	400	80
BGR 27-3	265	102	30	400	80
BGR 33-3	325	122	35	400	80
BGR 37-3	365	135	39	400	80



Modular system ramps

All homes are different. That is why our system ramps are available in different widths and lengths, and with turns of 22.5, 45, 90 or 180 degrees. The modules can be combined in an endless number of ways. The surface is made of expanded metal, but is also available in checker plate or in a combination of expanded metal and checker plate. We can also make expanded metal with smaller holes. Ask us and we will be very glad to help you decide!

*Please contact us by phone or email for personal assistance and service.
Also see our Ramp Guide on page 59 (Fig. 1.1 for modular system ramps).*



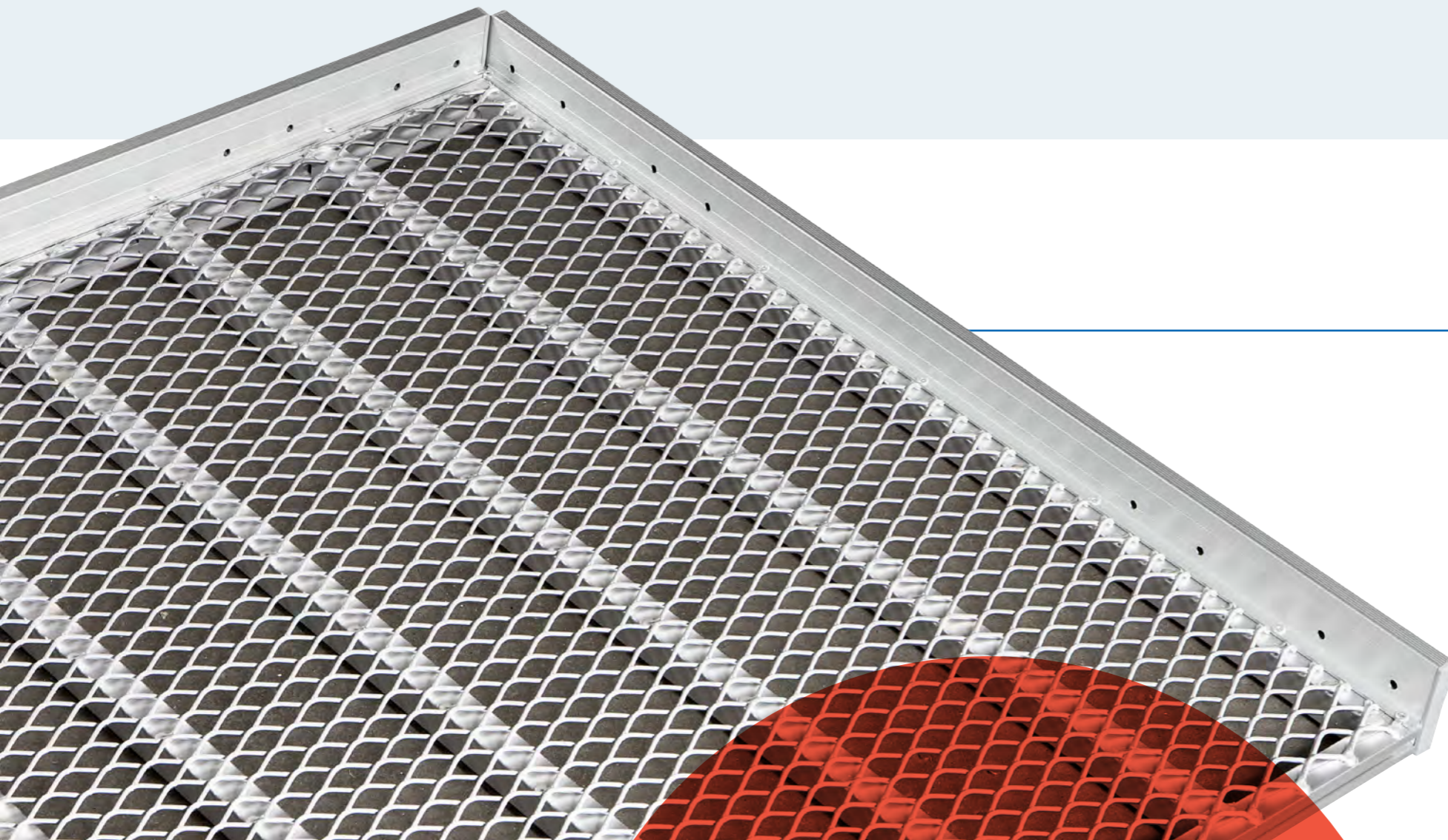
Easy assembly for all

Our ramps incorporate sophisticated technical solutions, but are still very easy to assemble and install. Putting together one of our modular system ramps only requires three tools: an Allen key, a Phillips screwdriver and a 13 mm socket wrench.



Technical Solutions

Modular system ramps



There is no such thing as bad weather

Weather is just something you have to adapt to, especially if you're outside year-round like our modular system ramps. That's why we've equipped them with a traction surface that not only provides excellent slip protection, but also lets through snow, rain and dirt to ensure the same great grip in any weather.

Mix and match

There is a widespread need for ramps in our society. That is why our modular system ramps can be combined in an endless number of ways. Mix and match lengths and angles to get the perfect ramp for your particular objectives. Or contact us and we'll custom build the specific parts you need.

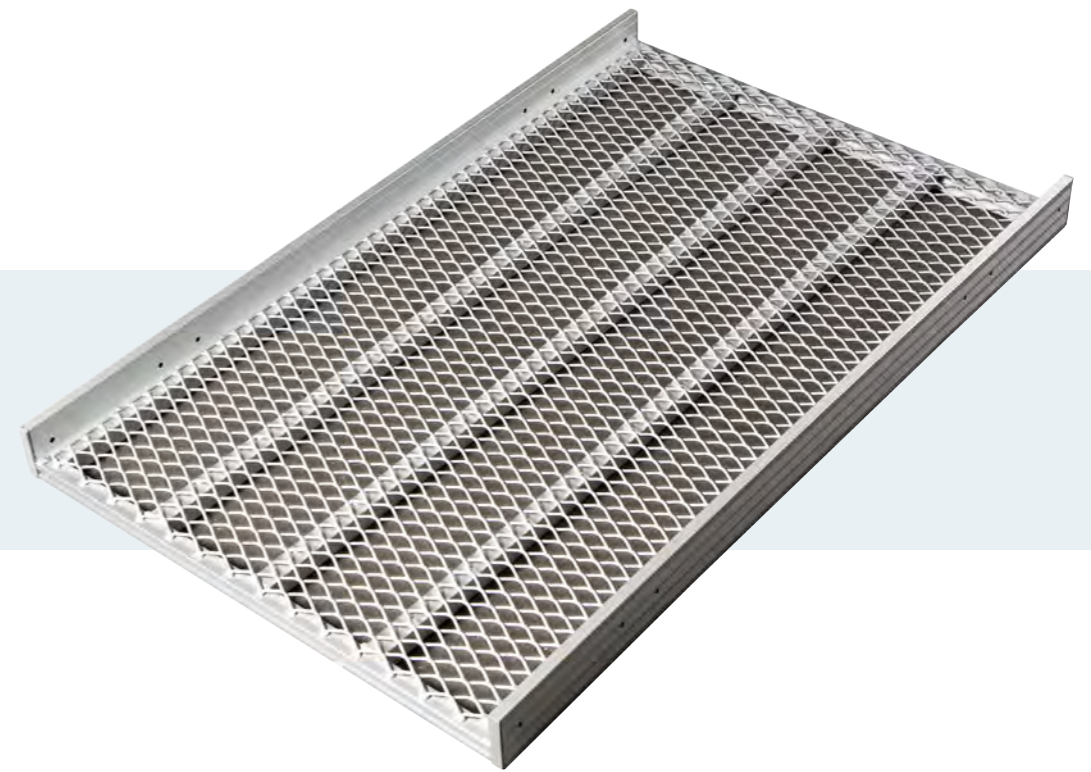
Landings








Our landings are available in 22.5, 45, 90 and 180 degrees. We can also make customized landings according to your specific requests.



Ramps

We have ramps in a number of different dimensions that can be linked together to construct your perfect ramp. We can also make customized ramps according to your specific requests.



	Dimensions (cm)	Weight (kg)	Max load (kg)	Angle	Layout
P-1	125 x 125	18	400	90°	
P-2	125 x 200	30	400	180°	
P-3	150 x 150	24	400	90°	
P-4	125 x 125	19	400	90°	
P-5	150 x 150	28	400	90°	
AP 22	-	-	400	22,5°	
AP 45	-	-	400	45°	

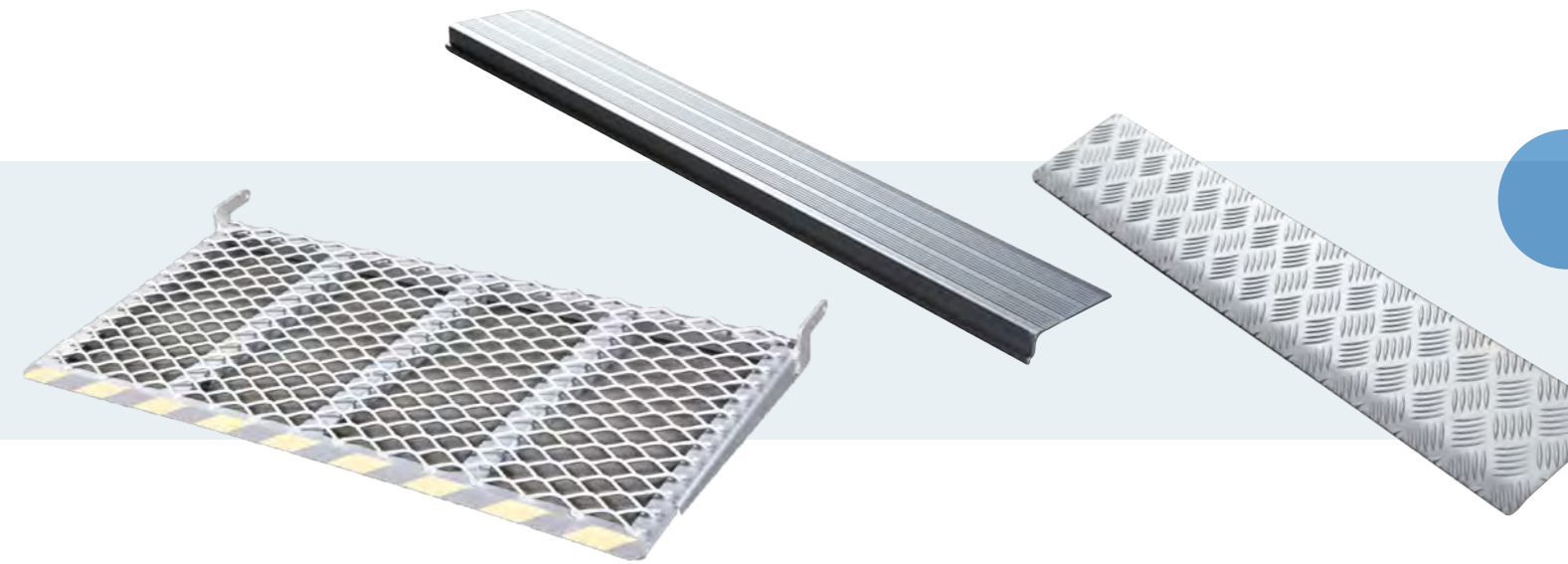
	Length (cm)	Width (cm)	Weight (kg)	Max load (kg)
R-50	50	90	6	400
R-100	100	90	12	400
R-125	125	90	15	400
R-150	150	90	18	400
R-200	200	90	24	400
R-250	250	90	30	400
R-300	300	90	36	400

Handrails

Handrails are available for all ramps and landings and are recommended for large height differences. The handrails can be added later if you like – all our landings and ramps are prepared for retrofitting.



Accessories



	Length (cm)	Weight (kg)
G-35	35	2,6
G-50	50	2,7
G-75	75	3
G-100	100	3,2
G-125	125	3,6
G-150	150	4
G-200	200	4,8
G-250	250	5,7
G-300	300	7,4

	Description	Dimensions (cm)	Weight (kg)
ÖL	Upper part	90 x 15	2
NL	Lower part	90 x 45	3
RA	Lip with straight connection	90 x 10	1,7
RA1-125	Lip with straight connection	125 x 10	2,4
RA1-150	Lip with straight connection	150 x 10	2,8
RA2- 90	Lip with straight connection	90 x 20	3,4
RA2-125	Lip with straight connection	125 x 20	4,8
TR	Stair		

Accessories



Accessories



Description

Dimensions (cm)

HLE	Bracket for support leg and handrail	-
SKJ	Joining device – used between two ramps or landings	-
KRL	Joint strip for connections between all types of ramps and landings	-
150S-1250S	Support leg (complete with bracket)	-
UP	Base plate	15 x15

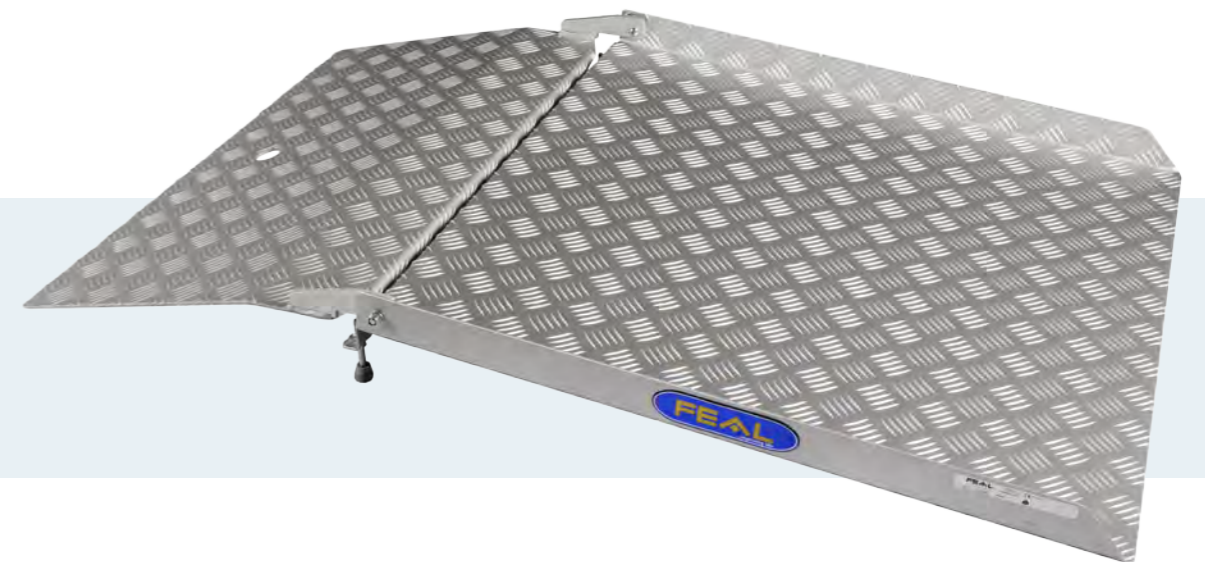
Description

G-90	Handrail end 90°
G-180	Handrail end 180°
RKN	Rail joint - adjustable and articulated
GST	Rail



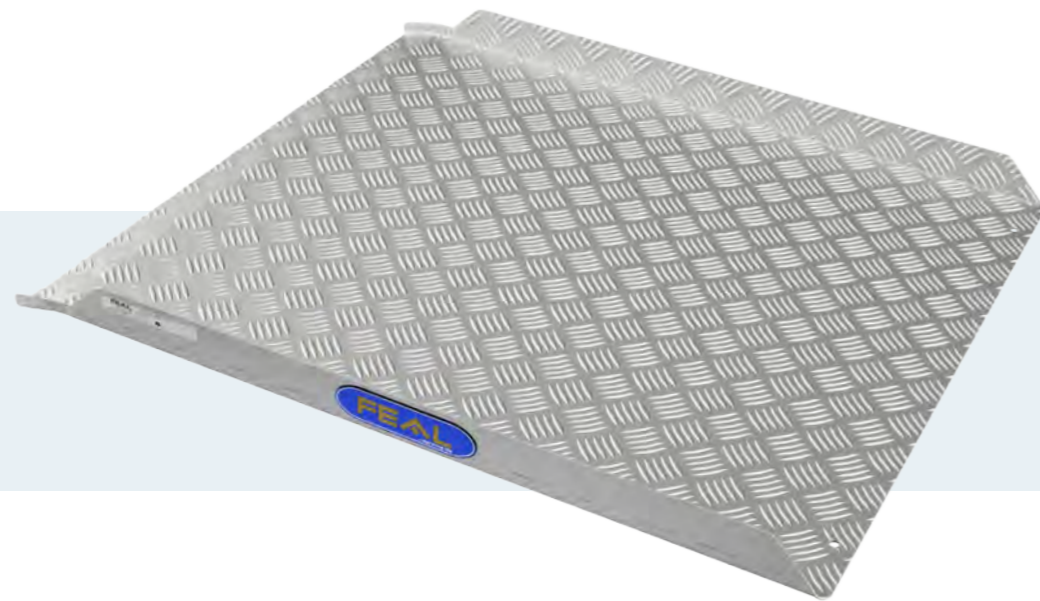
Drive-in ramps

Cross high thresholds with ease with a drive-in ramp. The ramps are available in various dimensions to suit your home. The surface has excellent grip.



Fixed drive-in ramp

Simple drive-in ramp for universal use.



	Width (cm)	Length (cm)	Weight (kg)	Max load (kg)
DI1040	75	40	3	300
DI1080	75	80	7	300
DI1120	75	120	9	250

Folding drive-in ramp

Our two-part drive-in ramps fit over the threshold and can also be used for sliding doors.



	Width (cm)	Length (cm)	Weight (kg)	Max load (kg)
DI2080	75	80/45	10	300
DI2112	75	125/45	13	300



Loading ramps and loading rails

Load heavy goods, lawnmowers, or why not even the dog, with our portable loading ramps and loading rails. Lightweight with superior slip protection. Fit easily in the car when not in use.

Loading ramps

Perforated ramps in durable materials that mount easily on the back of your car. We also make customized ramps according to your specific requests.



	Width (cm)	Length extended (cm)	Height in car (cm)	Weight (kg)	Max load* (kg)
LR 48-19	48	190	107	18	800
LR 48-21	48	214	119	20	800
LR 48-23	48	238	131	23	650
LR 48-27	48	282	149	27	650
LR 69-19	69	190	107	25	800
LR 69-21	69	214	119	28	800
LR 69-23	69	238	131	31	650
LR 69-27	69	282	149	35	650
LR 90-19	90	190	107	32	800
LR 90-21	90	214	119	36	800
LR 90-23	90	238	121	40	650
LR 90-27	90	282	149	45	650

*With support legs, all of these ramps can withstand loads up to 1000 kg.

Loading rails

Folding rails that come in several different dimensions. Easy to carry and to use. We also make customized rails according to your specific requests.



	Length (cm)	Length folded (cm)	Weight (kg)	Max load/ea (kg)	Track width (cm)
Fixed					
LS150	150	75	7	400	27
LS200	200	100	9	400	27
LS250	250	125	11	400	27
Folding					
LS150V	150	75	8	400	27
LS200V	200	100	10	400	27
LS250V	250	125	12	400	27

Threshold ramps and cover plates

We are very happy to help with home modifications and offer several different types of threshold ramps and cover plates. A threshold ramp can be fit over an existing threshold and a cover plate can replace a removed threshold. Available in oak imitation, patterned gold anodized and checker plate.

Cover plates

Gold	Length (cm)	Width (cm)
RT 80-1000	100	8,0
RT 95-1000	100	9,5
RT 110-1000	100	11,0
RT 125-1000	100	12,5
RT 140-1000	100	14,0
RT 170-1000	100	17,0
RT 200-1000	100	20,0
RT 80-2500	250	8,0
RT 95-2500	250	9,5
RT 110-2500	250	11,0
RT 125-2500	250	12,0
RT 140-2500	250	14,0
RT 170-2500	250	17,0
RT 200-2500	250	20,0

Oak	Length (cm)	Width (cm)
EK 80-1000	100	8,0
EK 95-1000	100	9,5
EK 110-1000	100	11,0
EK 125-1000	100	12,5
EK 140-1000	100	14,0
EK 170-1000	100	17,0
EK 200-1000	100	20,0
EK 80-2500	250	8,0
EK 95-2500	250	9,5
EK 110-2500	250	11,0
EK 125-2500	250	12,5
EK 140-2500	250	14,0
EK 170-2500	250	17,0
EK 200-2500	250	20,0

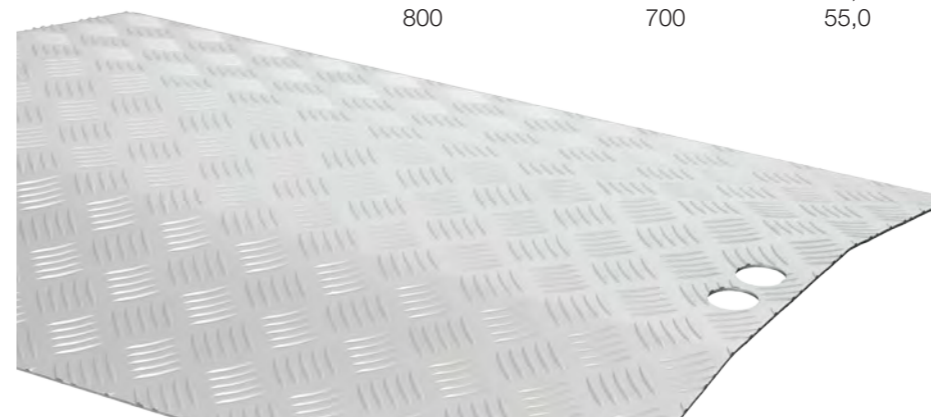
Threshold ramps

Gold	Length (cm)	Width (cm)
150-1000 E	100	15,0
250-1000 E	100	25,0
330-1000 E	100	33,0
150-2500 E	250	15,0
250-2500 E	250	25,0
330-2500 E	250	33,0

Oak	Length (cm)	Width (cm)
150-1000 EK	100	15,0
250-1000 EK	100	25,0
330-1000 EK	100	33,0
150-2500 EK	250	15,0
250-2500 EK	250	25,0
330-2500 EK	250	33,0

Checker plate	Length (cm)	Width (cm)
150-1000 D	100	15,0
245-1000 D	100	24,5
345-1000 D	100	34,5
400-1000 D	100	40,0
150-2500 D	300	15,0
245-2500 D	300	24,5
245-2500 D	300	34,5
400-2500 D	300	40,0

Bridge threshold ramp	Length (cm)	Tot. width (cm)	Width at centre (cm)	Height (cm)
700	700	54,0	16,0	3,0
800	700	55,0	17,0	3,5





Returns and Warranty

We have a five-year warranty on all products.
All of our products are CE-marked.
If you need to return a product, just take a picture with a digital camera and explain the nature of the problem.
We currently have a return rate of less than 0.5%.
This is something we are very proud of!



Index

150-1000 D	63
150-1000 E	63
150-1000 EK	63
150-2500 D	63
150-2500 E	63
150-2500 EK	63
150S-1250S	52
245-1000 D	63
245-2500 D	63
245-2500 D	63
250-1000 E	63
250-1000 EK	63
250-2500 E	63
250-2500 EK	63
330-1000 E	63
330-1000 EK	63
330-2500 E	63
330-2500 EK	63
345-1000 D	63
400-1000 D	63
400-2500 D	63
AAA diploma	14
Allen key	46
Anodization	18
AP 22	48
AP 45	48
ATV	27
Base plate	52
Bathroom	62, 63
Bergslagen	8, 9
BGR 19	42
BGR 19-3	43
BGR 21	42
BGR 23	42
BGR 25-3	43
BGR 27	42
BGR 27-3	43
BGR 33-3	43
BGR 37-3	43
Bracket for support leg	52
Bridge treshold ramp	63
CE-marked	65
China	25
Cleaning machines	27
Cover plates	62, 63
Delivery	17
Design	12
DI 1080	56
DI1040	56
DI1120	56
DI2080	57
DI2112	57
Dogs	27
Drive in ramps	55, 56, 57
EK 110-1000	62
EK 110-2500	62
EK 125-1000	62
EK 125-2500	62
EK 140-1000	62
EK 140-2500	62
EK 170-1000	62
EK 170-2500	62
EK 200-1000	62
EK 200-2500	62
EK 80-1000	62
EK 80-2500	62
EK 95-1000	62
EK 95-2500	62
Entrepreneurial Company of the year	10, 14
Environment	14
Expanded metal	18, 43
F 110	34
F 150	34
F 200	34
Fixed drive in	56
Fixed portable	29, 32

FL 110	34
FL 150	34
FL 200	34
Folding drive in	57
Folding portable	29, 33
FT 200	35
FT 300	35
FTW 200	35
FTW 300	35
FW 200	34
G-100	50
G-125	50
G-150	50
G-180	53
G-200	50
G-250	50
G-300	50
G-35	50
G-50	50
G-75	50
G-90	53
GAT	53
Handrail	53
Handrails	50
History	20
HLE	52
Industrial history	8,9
iRamp	30, 31, 37
IRP 200	37
IRP120	37
IRP170	37
IRP50	37
IRP90	37
Joining device	52
Joint strip	52
KRL	52
Landings	48
Lip, straight connection	51
Loading rails	59, 61
Loading ramps	59, 60
Locking	30, 31
Lower part	51
LR 48-19	60
LR 48-21	60
LR 48-23	60
LR 48-27	60
LR 69-19	60
LR 69-21	60
LR 69-23	60
LR 69-27	60
LR 90-19	60
LR 90-21	60
LR 90-23	60
LR 90-27	60
LS150	61
LS150V	61
LS200	61
LS200V	61
LS250	61
LS250V	61
Masada fortress	20
Mats Sundstedt	7
Modular system ramps	45, 46, 47, 48, 49, 50, 51, 52, 53
Mopeds	27
Motorbikes	27
Mounting plates	41
NL	51
Non-slip	30, 31
P-1	48
P-2	48
P-3	48
P-4	48

P-5	48
Pat Corcoran	25
Perfolight	30, 31, 34, 35
Portable ramps	27, 29, 30, 31, 32, 33, 34, 35, 36, 37, 67
R-100	49
R-125	49
R-150	49
R-200	49
R-250	49
R-300	49
R-50	49
RA	51
Rail	53
Railjoint	53
Rails	59, 61
Ramp guide	67
Returns	65
RKN	53
RT 110-1000	62
RT 110-2500	62
RT 125-1000	62
RT 125-2500	62
RT 140-1000	62
RT 140-2500	62
RT 170-1000	62
RT 170-2500	62
RT 200-1000	62
RT 200-2500	62
RT 80-1000	62
RT 80-2500	62
RT 95-1000	62
RT 95-2500	62
Screwdriver	46
SIAT	10
SKJ	52
Snow blowes	27
Socket wrench	46
Stair	51
Support leg	52
T 120	33
T 200	33
T 200-3	33
T 300	33
T 90	33
Tailbord ramps	39, 40, 41, 42, 43
Telescopic portable	29, 32
Toilet	62, 63
TR	51
Traction surface	41
Transport ramps	39, 40, 41, 42, 43
Treshold ramps	62, 63
Tresholds	55, 62
UP	52
Upper part	51
USA	25
VR 16	36
VR 20	36
VR 25	36
VR 28	36
Warranty	65
X 100	32
X 50	32
XW 100	32
Zhanxin Tang	25
ÖL	51

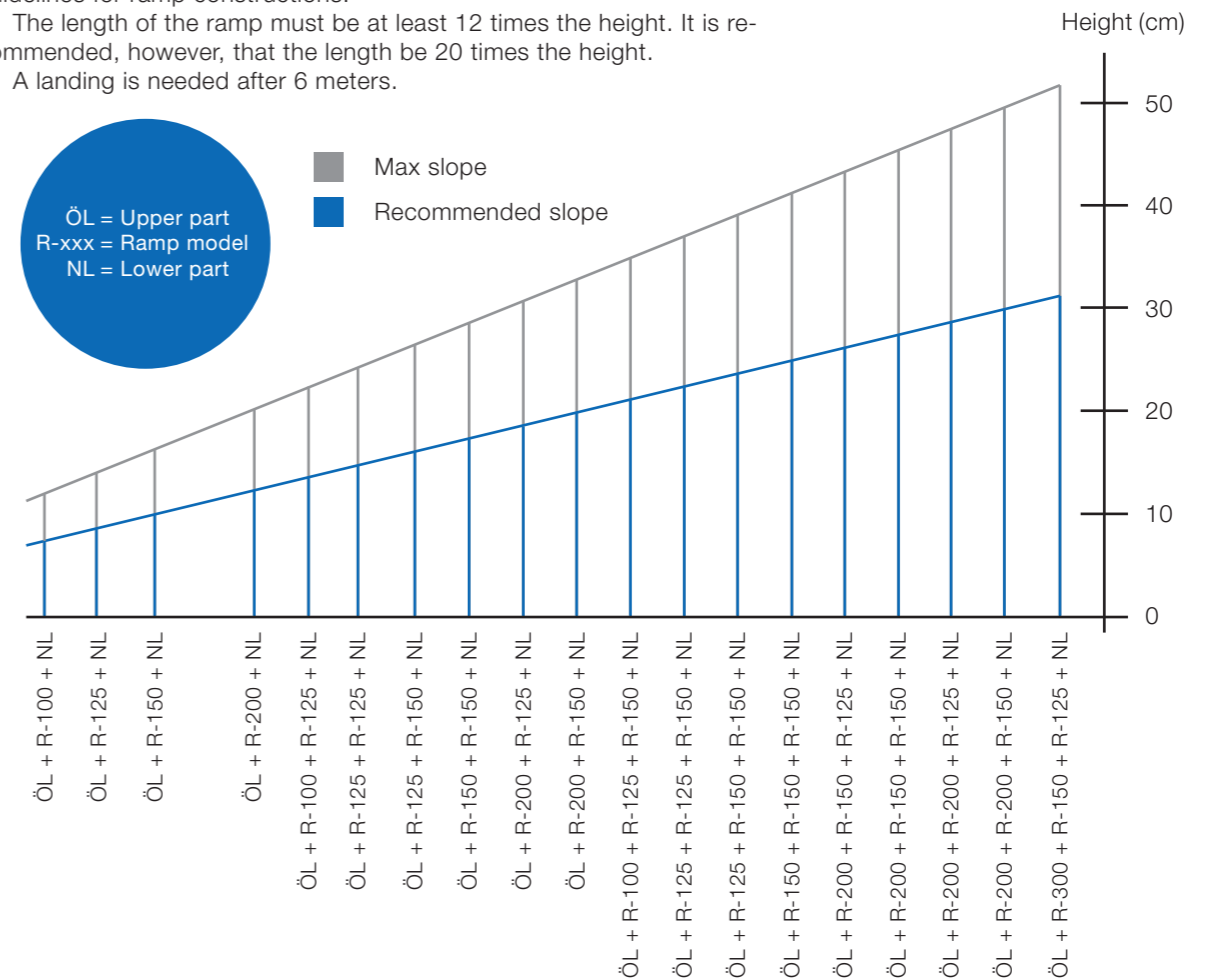
Ramp guide

Modular system ramps

Fig 1.1

This figure complies with the Swedish Institute of Assistive Technology guidelines for ramp constructions.

- The length of the ramp must be at least 12 times the height. It is recommended, however, that the length be 20 times the height.
- A landing is needed after 6 meters.



Portable ramps

Fig 1.2

Height	10 cm	20 cm	30 cm	40 cm	60 cm
Recommended models	X 50	X 100	F 150	T 200	T 300
	IRP50	F 110	IRP120	T 200-3	FTW 300
		XW 100	IRP170	F 200	FT 300
		IRP90	T 120	FW 200	
		IRP120		FTW 200	
		U0,9		IRP170	
		U1,2		IRP200	
				FT 200	

FEAL
...improving life

info@feal.se
+46 226 400 75
Södra Industriområdet 23
S-774 68 Horndal, Sweden

feal.se

